

NEXT EVENTS

Wed. 17th May - 20:00 to 22:00

Sat. 17th June

Mon. 17th Jul.

Sun Inn, High Street, Buxton

Green Drinks

Informal gatherings with conversation on various subjects. Please suggest green topics you'd like to discuss to contact@transitionbuxton.co.uk.

Tues. 9th May - 19:30 to 21:00

Tues. 13th June

Tues. 11th July

Members' meetings

Annual General Meeting.

General discussion and exchange of ideas for projects, with occasional guest speakers.

For more information, email members@transitionbuxton.co.uk

The Schoolroom, Poole's Cavern

Sun. 21st May 18:00

Transition Belper

see <http://www.transitionbelper.org/>

Film showing of "DEMAIN"

by Transition Belper

Sat. 3rd June - 14:00 to 16:00

Turner Memorial, The Slopes

Plant Swap

Come and bring your extra plants to exchange for others.

Sat/Sun 10th/11th June - 10:00 to 17:00

All round Buxton

see <http://buxtontownteam.org/working-on/buxton-open-garden-trail-2017/> to buy maps.

Buxton Garden Trail

We will have a stall at The Serpentine Community Farm.

Sat/Sun 15th/16th July - 10:00 to 17:00

All round Buxton

see <http://buxtonarttrail.com/> for maps.

Buxton Arts Trail

Connie the Consumasaurus will take part, featuring dinosaur-making workshop in the afternoons.

Have a look at our website on www.transitionbuxton.co.uk

See our Transition Buxton Facebook page

See twitter at <https://twitter.com/transitionbux>

email: contact@transitionbuxton.co.uk



When people join forces and decide to tackle the problems of climate change and oil shortage they've taken the step to creating a Transition Town.

April 2017

NEWSLETTER

Home Energy Checks

**Do you have huge energy bills?
Do you wonder where all that
electricity and gas is going?**

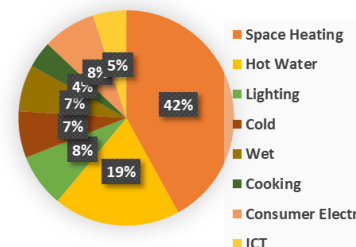
Transition Buxton is now offering a service to assess your domestic situation with regard to bills, insulation, heating methods and energy use routine. From that we can suggest the best ways to reduce your domestic energy bills on a one-to-one basis. Below is the typical energy use for an average family. On March 11th, 8 volunteers received training from Caroline Harmon of the Marches Energy

schoolroom for this.

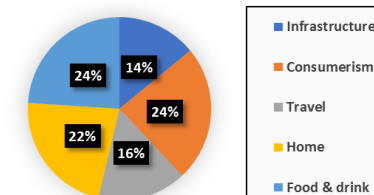
Caroline showed us that simply monitoring one's energy use with a simple monitor or smart meter can give you the impetus to change your habits and improve domestic efficiency by increasing insulation or using more efficient methods of heating the house. An average person in the UK produces 12.1 tonnes of carbon per year, whereas 1.5 tonnes would be sustainable, so we've got a long way to go.

The diagram below shows how it is typically split.

Energy Use



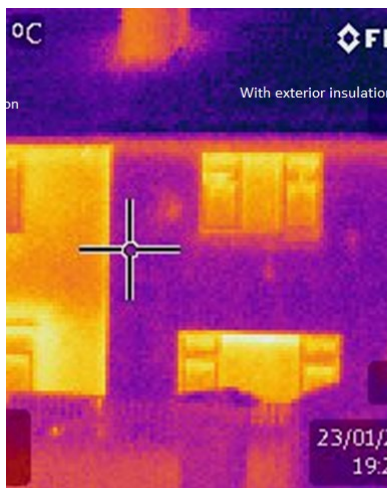
Average UK Carbon Footprint of 12.1 tonnes/year



Agency, which is based in Shrewsbury. Poole's Cavern kindly allowed us to use their

Learning about different types of insulation was a large part of the seminar. The best methods obviously differ greatly according

to the building methods used for the building. Cavity wall insulation or external cladding are both very effective means of insulation, depending on the type of house. It is highlighted by this infra-red photo



showing adjacent properties, one with wall insulation, the other without. Insulating walls saves about 1.9 tonnes of carbon per year, more if off gas.

We can make a good calculation of how much money you can save, by applying our recommendations, so if you would like to book a one-to-one appointment please contact Peter on contact@transitionbuxton.co.uk.

Buxton in Bloomin' Winter

In preparation for Christmas, last year, we used our Traditional Christmas Decoration



workshop to join in with the Town Team's initiative, which was decorating the town with home-made decorations, made from greenery and recycled materials. Below we see Suzanne making flowers from empty milk bottles.



You can see the finished effect in the previous photos, where our chosen spot was the railings outside The Springs Shopping Centre. We didn't neglect our indoor decorations though, as the workshop included our habitual dinosaur making workshop (shown opposite), paper friezes, biscuit decorations

and others.



Solar Installations

There are now two projects underway with respect to solar arrays; one a floating array, which has been accepted for feasibility study funding, but is still being held up by land ownership issues; the other based on land, which is at a preliminary stage is in partnership with Buxton Rugby Club, who approached TB for their expertise in the area. Their land is shielded from the National Park by a screen of trees (important for planning). However, Western Power have stated that it would require a new connection to the grid (at Hindlow), which may threaten the viability of the scheme. On the other hand, WRAP (the Government agency who support community renewable energy projects) have indicated that an application for feasibility study funding is likely to be favourably received. In order to find out if the scheme is financially worthwhile, it is essential that a consultant be recruited to do the study by a formal tender process. The tender document, drafted by Derek, is currently being checked by both interested parties. The feasibility study should be complete, thus allowing the application to be made to WRAP in July. Both parties are committed to the "profits" being put to good community use. This would be for the benefit of provision at the Club, particularly their youth work and, for us, to improve the energy efficiency of the housing stock in Buxton, particularly for those in fuel

poverty. The exact division between these aims will be decided if the scheme is viable. If it goes ahead, there will be need for a group of us to be prepared to set up and run a new community mutual to raise the funds and to operate the farm. So, whilst volunteers are not yet needed, perhaps you could begin to think about whether it is something that you could do to assist us make Buxton a little bit more sustainable (assuming the scheme is viable).

Community Orchard

Another site was added to the dispersed orchard in February, at Hogshaw Drive, where another half dozen trees were added. We are still looking for tree sponsorships (£20 per tree) and wardens.

Repair Café

One of the ideas to come out of the recent Members' meetings has been to start up a periodic Repair Café, where people could bring their tired and damaged appliances for renovation. Transition Belper and Transition Chesterfield are planning to start them. Does anyone have skills and the time to spare to help with something like this. We held a bicycle repair workshop during one of our Green Days, but it could be for anything, broken toys, appliances or even upcycling into something else useful.

